

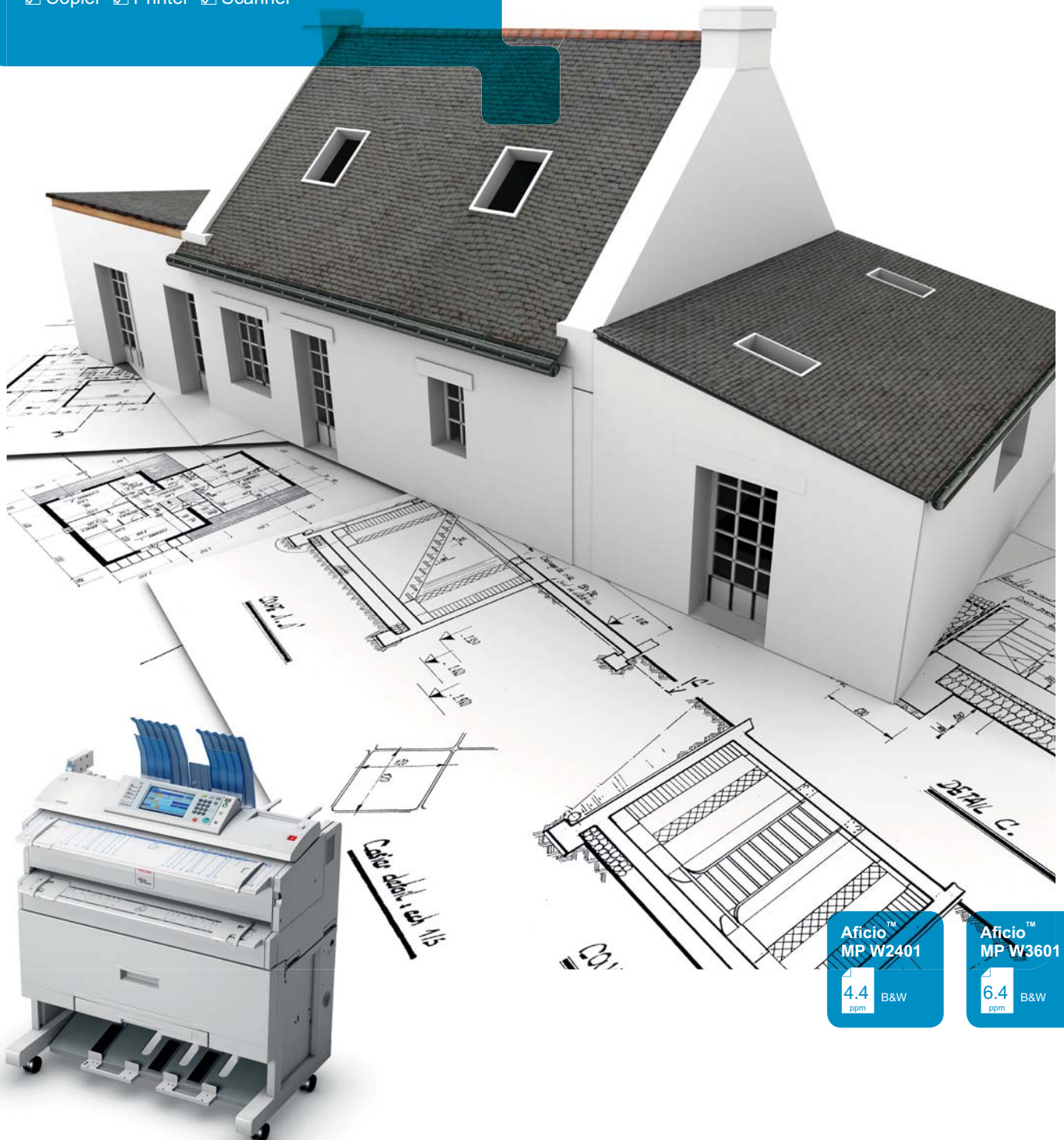
RICOH
imagine. change.

Aficio[®]

MP W2401
MP W3601

Wide format printer

Copier Printer Scanner



Aficio[™]
MP W2401

4.4
ppm B&W

Aficio[™]
MP W3601

6.4
ppm B&W

Big performance, small footprint

The Aficio™MP W2401/MP W3601 provide the dream combination: affordable wide-format document production in a compact footprint. You can securely copy, scan, distribute and archive with one surprisingly compact unit. With their top-of-the-range optional colour scanner and speed of 6.4 A1 pages per minute (MP W3601), these devices offer productivity improvements for the busy office. You can process a variety of paper sizes from A4 up to A0 or opt for the two roll configuration or the additional 250-sheet paper cassette for printing up to A3.





Speedy wide format printing



Black and white printing

These mono wide format devices have a resolution of 600 dpi, which produces high-quality black and white prints.



4.4/6.4 pages per minute (ppm)

Rapid printing of up to 4.4 ppm on the MP W2401 and 6.4 ppm on the MP W3601 – these devices quickly handle even the most demanding wide format jobs.



Simple to use

The MP W2401/MP W3601 have been designed with intuitive and simple to use features, including an LCD colour touch panel.



Eco-friendly and cost efficient

With a number of eco-friendly and money saving features, such as a short warm-up time, increased toner yield and low power consumption, these devices are kind to both the environment and your budget.



Enhanced security

Both devices support security standards IEEE 802.11 WEP and WPA/WPA2 (IEEE 802.11i).

Enhance your wide-format workflow

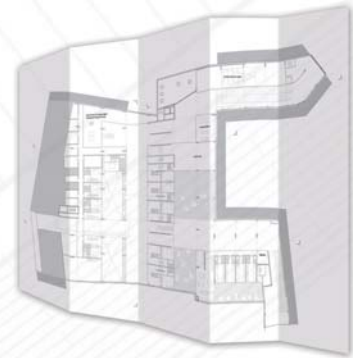


Single space-saving footprint

For such heavyweight performers, the MP W2401/MP W3601 take up surprisingly little space with their single footprint. No wonder they are the most compact devices in their class. You certainly won't need a separate print room for it, which saves valuable office space.

Scan, distribute, share

The optional built-in colour scanner is guaranteed to increase your productivity. You can revise large format drawings in colour: add comments, scan the drawings and distribute – scan to email, folder or URL is also possible. The MP W2401/MP W3601 even allow you to preview scanned documents before transmission. Scan your original documents at a high resolution of 600 dpi and save them on a USB memory device or SD memory card.



Easy to operate

If you use other Ricoh devices you will immediately feel at home. The 8.5-inch LCD colour touch-panel allows you to access all the device's great functions. Its status is clearly visible and a login/logout hard key enables rapid user authentication. Documents can be previewed in full-colour thumbnails. A simplified display with fewer keys and a larger font allows visually impaired users to operate the devices confidently. And to make the devices even more user-friendly, they support 18 languages.



Highly secure

Both devices incorporate the latest level of security features to meet customer requirements in this area. They support security standards IEEE 802.11 WEP and WPA/WPA2 (IEEE 802.11). WPA/WPA2 is an interoperable Wi-Fi security specification introduced by Wi-Fi Alliance. It provides a high level of assurance to enterprises and small businesses. Your data remains fully protected; only authorised users are able to access your networks.

Maximum uptime

With the aid of clear, step-by-step animated guidance the touch-panel guides you smoothly through toner replacement procedures or any irregularities such as a paper jam. The paper jam clearance mechanism itself is refreshingly simple. Side guides enable easy lower tray stacking.



Environmentally friendly

At Ricoh we help you lower the environmental impact in your office as well as lowering your cost. The MP W2401/MP W3601 have eco-friendly and money-saving features such as a short warm-up time (less than 120 seconds), increased toner yield and low power consumption. They also comply with the Restriction of Hazardous Substances (RoHS) directive. In addition, Ricoh products are Energy Star compliant. This means less CO₂ is produced in providing the energy needed to run Ricoh devices.

Product Snapshot



- 1** Backlit LCD touch panel display with simplified mode
- 2** 1 or 2 Roll Paper Drawer
- 3** Scan to USB/SD Card

- 4** Optional Paper Cassette adjustable up to 12" x 18"
- 5** Bypass table
- 6** Embedded scanner and printer



Why RicoH?



Business Solutions Group

When you buy a RicoH device you gain access to our Business Solutions Group – a dedicated software support centre. Come to us with your challenge and we will identify the solution, source it internally, or develop one specifically to suit your business and integrate into your existing systems. The Business Solutions Group works closely with customers and application developers to extend the efficiencies of RicoH's software-enabled copiers and printers in order to meet specific business needs.

Free recycling programs for RicoH customers

The biggest action we can take to reduce our environmental impact is to reduce our level of wastage and resources, prolong the life of our products through reuse, or recycle end of life material into a feed stream for new products.

That is why RicoH offers a number of free recycling programs to our customers that ensure machines, consumables and parts are safely recycled, achieving a recycling ratio of up to 98%. We not only accept our own goods, but also those from other companies. To register for one of our recycling programs please visit ricoh.com.au/about/environment



Responsible Service

At RicoH we are dedicated to offering our customers the highest level of service and maintenance; that is why our service response times average a mere four hours and you have access to over 500 manufacturer-trained technicians across the country. To place a service call or to speak with one of our friendly customer service agents, simply phone our national contact centre on 1800 181 002 between 8am – 8pm EST.

MP W2401/MP W3601

MAIN SPECIFICATIONS

COPIER

Copying process:	Electro photographic printing
Copy speed:	MP W2401: 2.4/4.4 copies per minute (A0-A1) MP W3601: 3.4/6.4 copies per minute (A0-A1)
Resolution:	Maximum: 600 dpi
Multiple copy:	Up to 99 (ten key input)
Warm-up time:	Less than 2 minutes
First output speed:	Less than 20 seconds (A1)
Reduction/enlargement:	4R/4E
Zoom:	25 - 400% (in 0.1% steps)
Memory:	1,024 MB + 160 GB Hard Disk Drive
Paper input capacity:	1-sheet bypass tray 2 Roll Feeder (option) 250-sheet paper cassette (option)
Paper output capacity:	Top: 50 sheets A1 (plain paper) Bottom: 40 sheets A0 (plain paper)
Paper size:	Minimum: 210 x 257 mm (175 mm roll) Maximum: 914 x 15000 mm (175 mm roll)
Paper weight:	64 - 105 gsm
Dimensions (W x D x H):	1,080 x 637 x 580 mm
Weight:	Less than 107 kg
Power source:	220 - 240 V, 50/60 Hz, 10 Amp
Power consumption:	Less than 1,400W

SCANNER TYPE W3601 (OPTION)

Scan speed:	Maximum 80 mm per second (B&W); 26.7 mm per second (Colour)
Resolution:	Maximum: 600 dpi (TWAIN: 150 - 1200 dpi)
Original size:	Maximum 914 x 15,000 mm
Output formats:	TIFF (B&W)/JPEG (Colour)/PDF
Bundled drivers:	Network TWAIN
Scan to email:	SMTP, TCP/IP
Destination addresses (Group):	Maximum 100 per send
Stored destination addresses:	Maximum 2,000
Address book:	Via LDAP or locally on Hard Disk Drive
Scan to folder:	Via SMB, FTP or NCP protocol
Destination:	Maximum 50 folders per send
Scan to PDF:	Standard

OTHER OPTIONS

2 Roll Feeder, 250-sheet paper cassette (up to 12" x 18"), Table, Originals hanger, Rollholder, Rear stacker, File Format Converter, Browser Unit, USB 2.0/SD slot, Wireless LAN

For availability of models, options and software, please consult your local Ricoh supplier

PRINTER TYPE W3601 (OPTION)

Controller type:	Embedded
Print speed:	MP W2401: 2.4/4.4 prints per minute (A0/A1) MP W3601: 3.4/6.4 prints per minute (A0/A1)
Printer resolution:	Maximum: 600 dpi
Print size:	Minimum: 210 x 257 mm Maximum: 914 x 15,000 mm
Network protocol:	TCP/IP, IPX/SPX (Auto switching available)
Supported file formats:	HPGL, HPGL2 (HPRTL), TIFF (CALS), Adobe® PostScript® 3™
Supported environments:	Windows® 2000/XP/Vista/7/Server 2003/Server 2008, Mac OS X (classic)
Interface:	Standard: Ethernet 10 base-T/100 base-TX, USB 2.0
Option:	Wireless LAN (IEEE 802.11b), Gigabit Ethernet
Supported Driver:	Postscript 3, HDI

RICOH
imagine. change.

